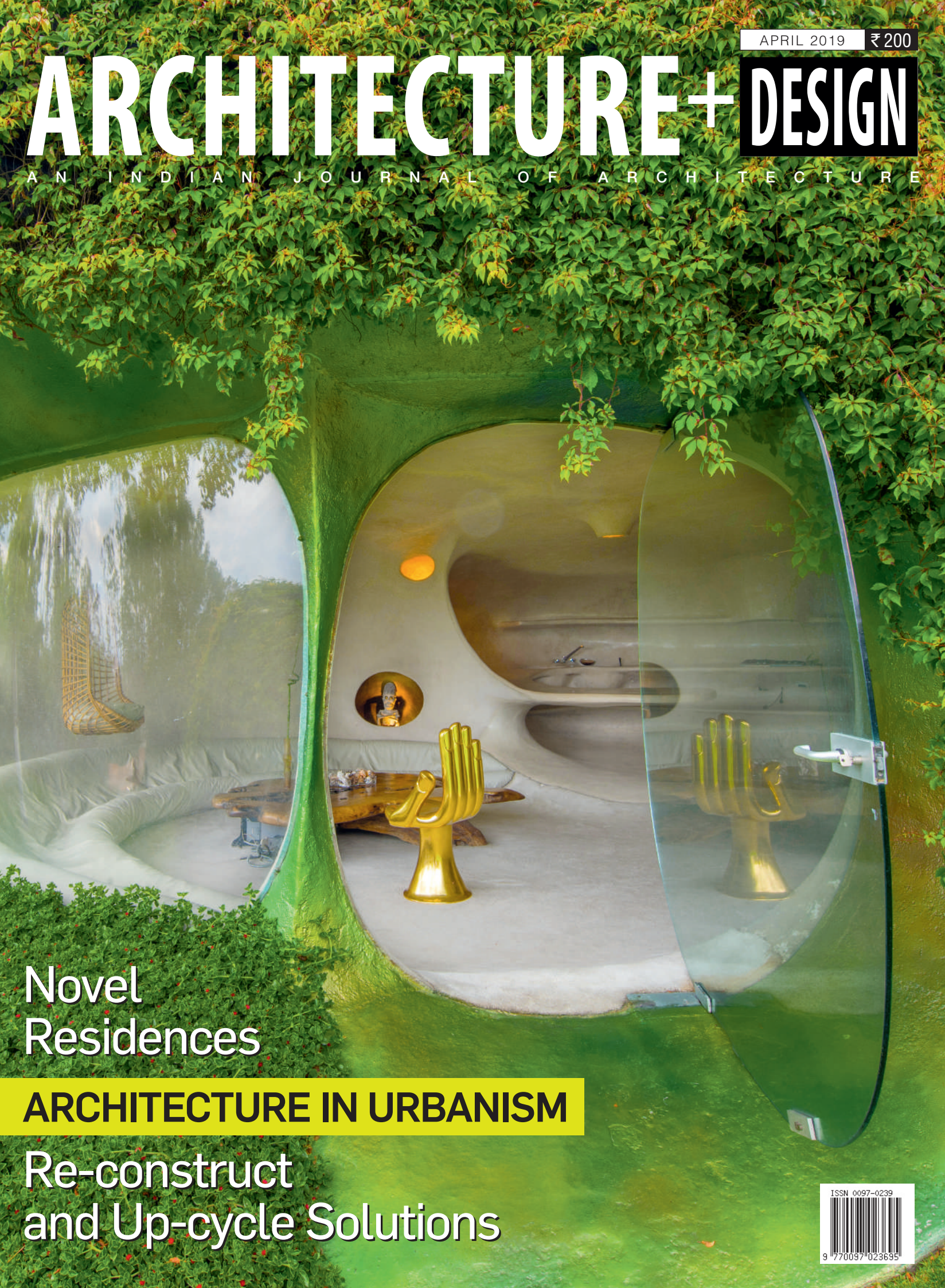


APRIL 2019 ₹ 200

# ARCHITECTURE+DESIGN

A N I N D I A N J O U R N A L O F A R C H I T E C T U R E



Novel  
Residences

**ARCHITECTURE IN URBANISM**

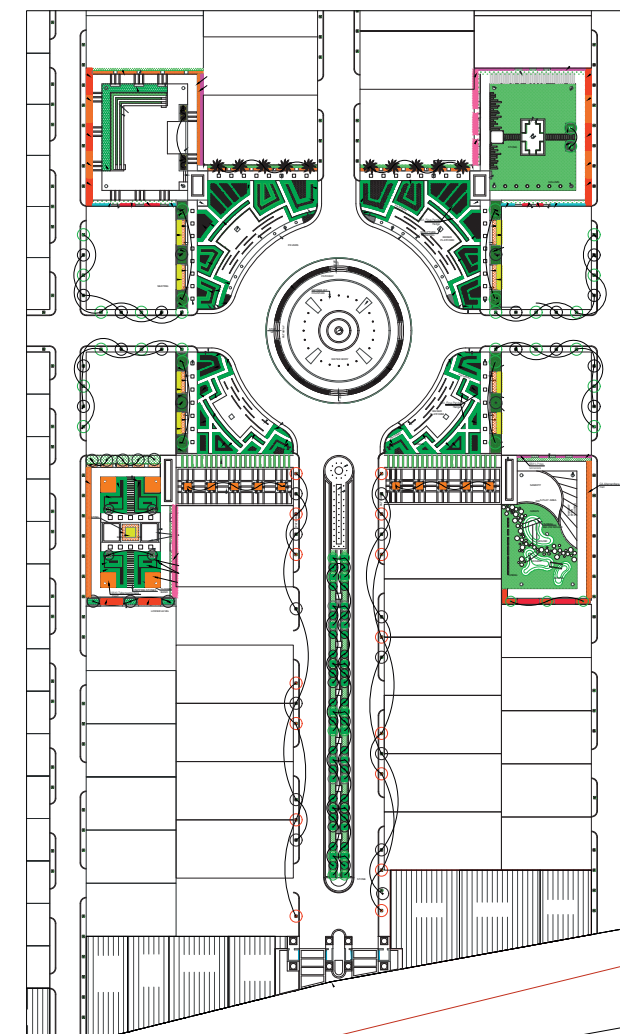
Re-construct  
and Up-cycle Solutions

ISSN 0097-0239

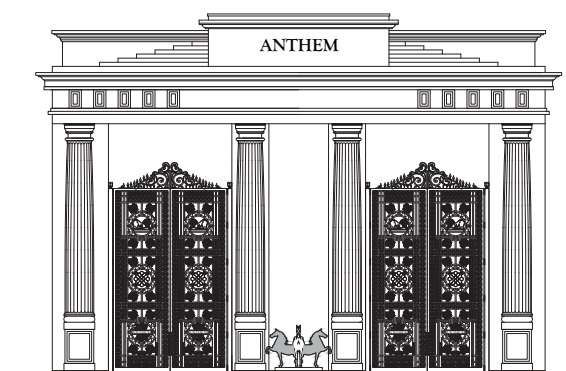
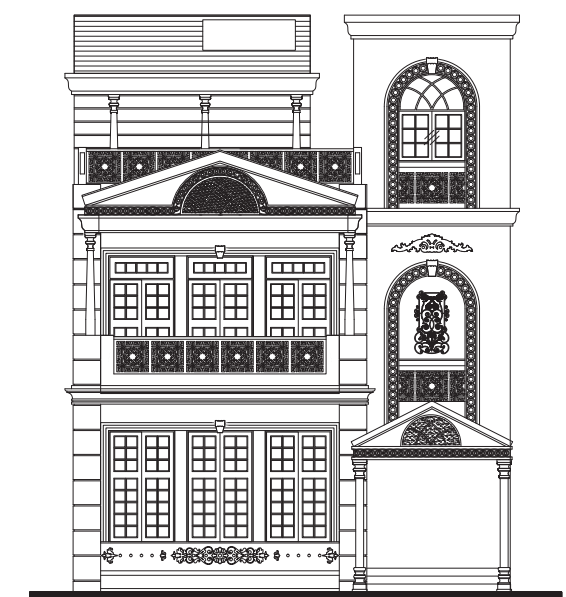


9 770097 023635





PLANTING PLAN



ELEVATIONS

# Inspired by European architecture...

**Project:** The Anthem, Agra  
**Architects:** Nexusplus Consultants Pvt Ltd, Noida



Peeyush Srivastava

Inspired by the architecture and splendid greens of Europe, the project is a theme-based township in the heart of Agra. Spread over 28 acres in sector 15 Awas Vikas Agra, it is situated at a location which is a few minutes' drive from landmarks like Sikandara, Gurukatal, and about 15km from Taj Mahal.

Conceived in 2016, which was the rock bottom of the real estate market, it was very challenging for the architects to create a

precarious balance between the concept and commercial feasibility and saleability of the project. The desire to have more than mandatory greens was openly denied by the developers in order to achieve maximum saleability. The team of architects came out with a idea of central avenue right at the entry of the township with a 7.5m-wide green strip (which is the minimum width to be counted as green) flanked by 7.5m-wide one-way road on both side thus

creating a magnificent 22.5 central avenue.

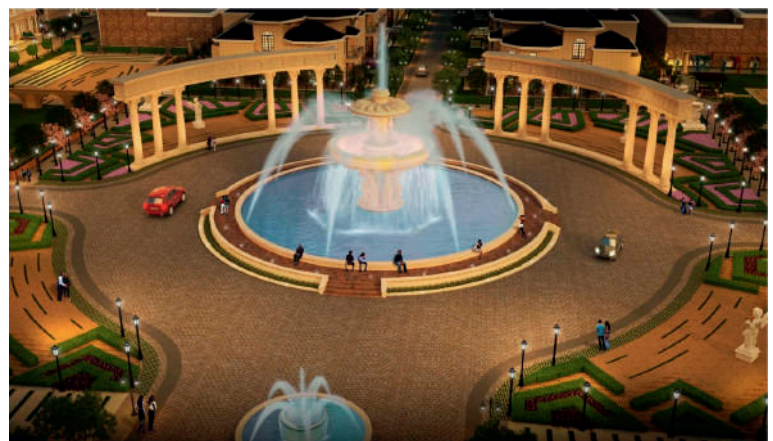
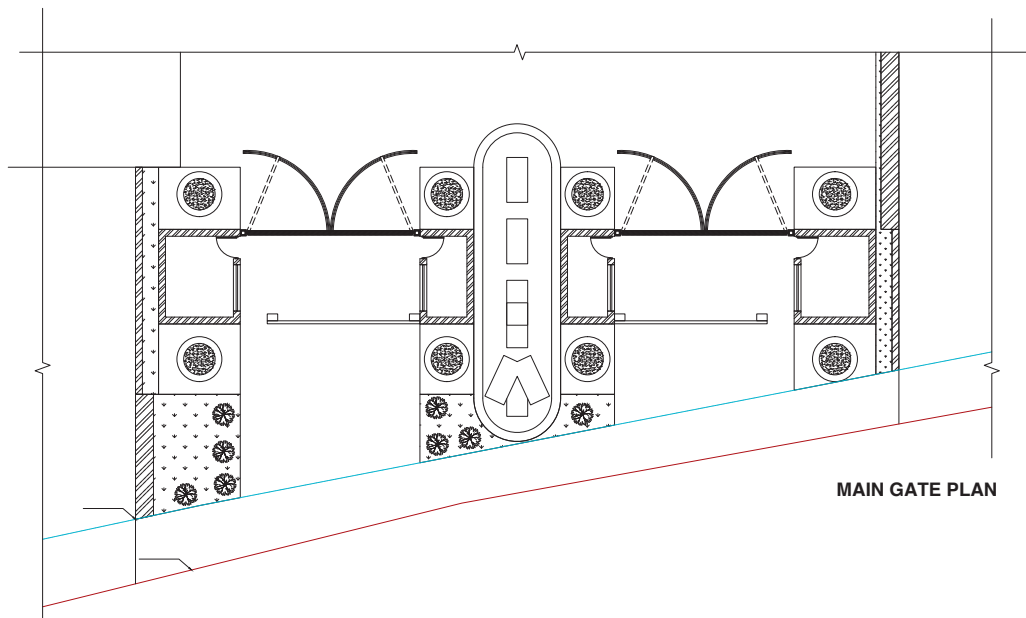
The majestic 50ft-high gate at the entry is inspired by the Brandenburg gate of Berlin. Decked with 30ft-high MS gates, extensive GRC works, cobbled stone floor and a sculpture of running horses, the gate stands tall as a landmark of Agra.

The central avenue is lined with sculptures and landscape inspired by London's Hyde Park. Exotic greens, water bodies and fountain then lead to the city's central square.

Conceived as a green roundabout at first,







'the great grand fountain' inspired by Der de la Concorde fountain, Paris, with its breathtaking light and sound show is a truly mesmerizing site and a personalised landmark to the city.

Being a challenging task with limited available percentage of green, the architect and their team created eight patches of green landscape arranged diagonally around the central square thus creating glorious vistas in all direction.

There are sublimed landscape greens embellished with trellises and artefacts, baroque gardens for leisurely strolls, and stylish landscaped open-air theatre for hosting events. Cocooned in greens, the children's play area offers a healthy mix of activities, swings, slides and games.

The project offers plots varying in size from 200sq yard to 1000sq yards lined with exotic flora and connected with cobbled pathways providing

an option of one's personal European themed villa.

The township offers two housing plots on both ends to be planned as high-rise apartments. The club Athens has been designed with a slice of baroque architecture and facilities like banquet, gymnasium and snooker along with table tennis, yoga and spa.

This premium township also offers commercial, premium residential and institution plots facing the main roads all around. ✚

### Factfile

**Client:** OP Chains, Agra

**Design Team:** Peeyush Srivastava (Principle Architect), Sandeep Negi (Project Architects), Nexus plus Consultants Pvt Ltd, Noida

**Site area:** 28.11 acres

**Cost of project:** Rs 100 crore

**Year of completion:** 2019